

WtE Swedish Approach, Bangkok, May 11 2016

Future Clean Energy Systems & WtE:

Innovative clean energy technologies need innovations for penetrating sustainable market

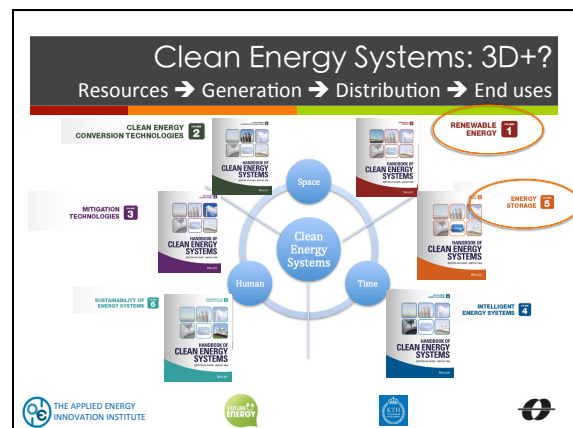
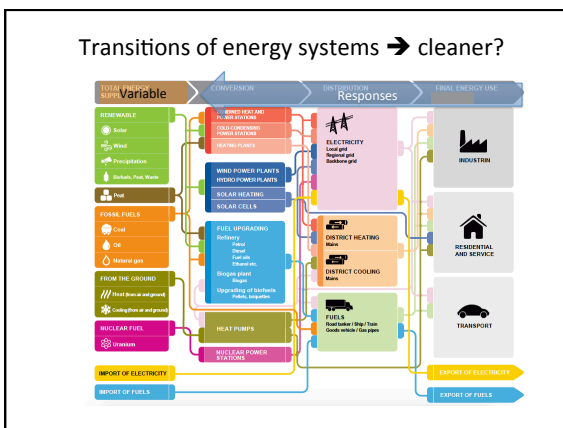
Prof. J. Yan
 Royal Institute of Technology (KTH) & Mälardalen University, Sweden
 Editor-in-Chief, Applied Energy & Energy Procedia

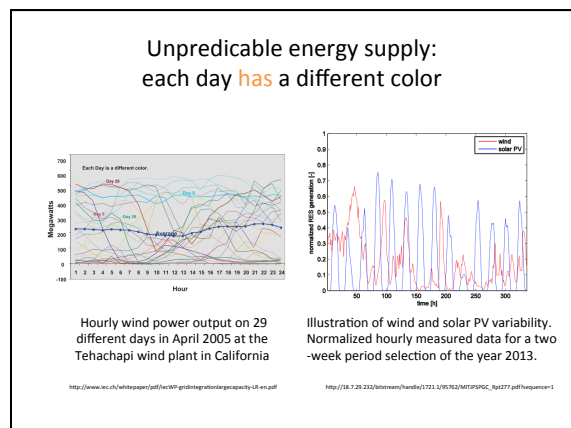
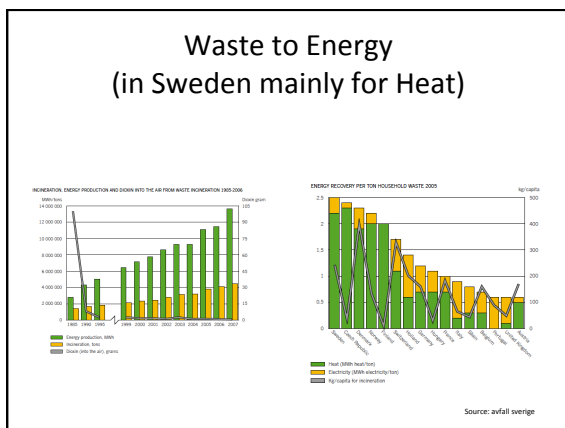
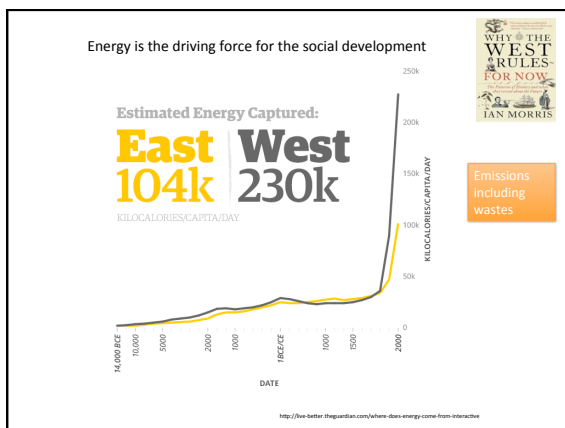
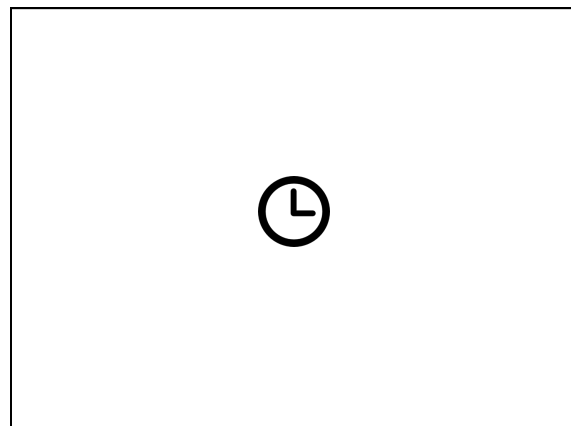
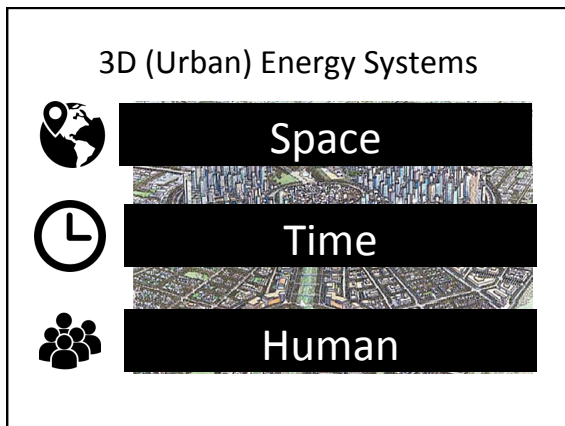
Wastes:
Sweden 0.02kg/\$
 VS
Thailand 0.13kg/\$

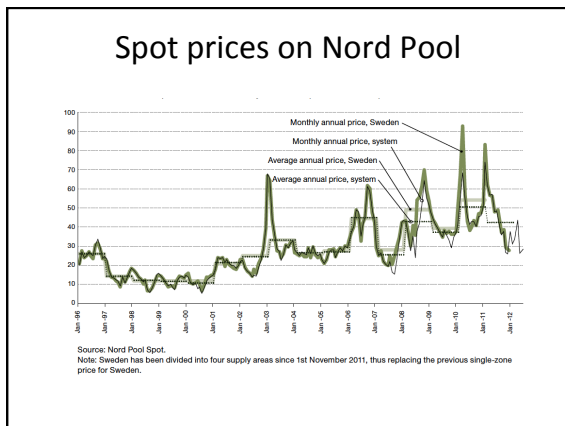
<http://www.atlas.d-waste.com/>



Future Clean Energy Systems







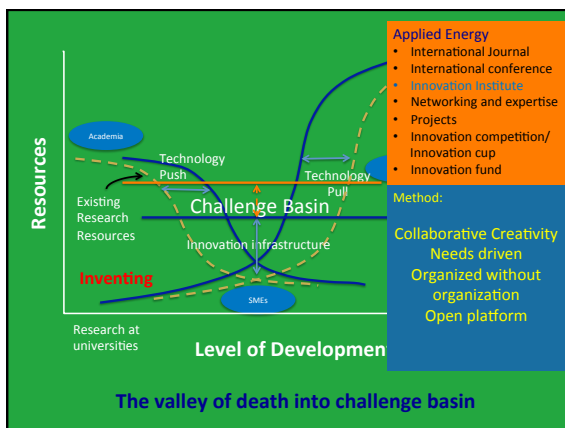
- Need **Innovations** to explore all dimension from R&D into application:

Implementation!

- Major barriers:

Innovation infrastructure
Institutional barrier

in particular
on international cooperation
with different (business) culture



Future Energy Profile

@Malardalen University

- Ca 10 M Euro profile with contribution of KKS foundation (40%) and industrial partners (40%) and university (20%)
- Three tracks
 - Renewable Energy
 - Energy efficiency and emission mitigation
 - Smart modeling, control and management of energy systems
- All projects involve industrial partners

Applied Energy: Collective Intelligence

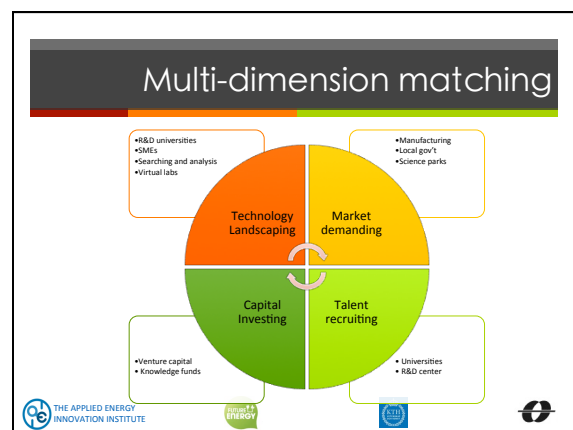
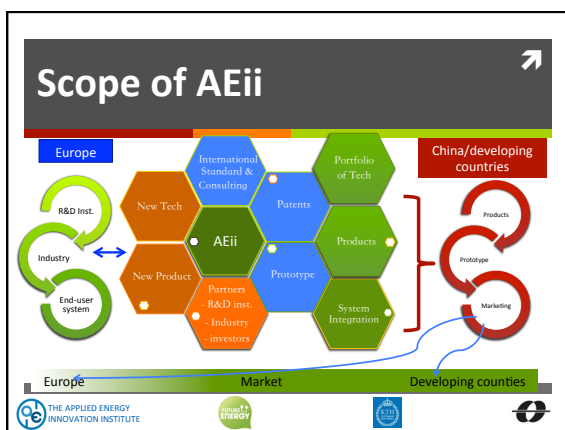
Applied Energy Journal – ICAE (Annual Conf.) – AEii (Innovation Platform) – Topic based Symposium (e.g. CUE) – UNI-LAB

CUE2016: Applied Energy Symposium and Forum: Low carbon cities and urban energy systems
 ICAE2016: The 8th International Conference on Applied Energy

The image shows two call for papers posters. The left one is for CUE2016 (Applied Energy Symposium and Forum) held in June 2016 in Japan. The right one is for ICAE2016 (The 8th International Conference on Applied Energy) held in Beijing, China. Both posters list various topics and submission details.

THE APPLIED ENERGY INNOVATION INSTITUTE

A vertical stack of four blue boxes containing the text: Scope, Business Model, Process, and International Network. The slide also features the institute's logo and several partner logos at the bottom.



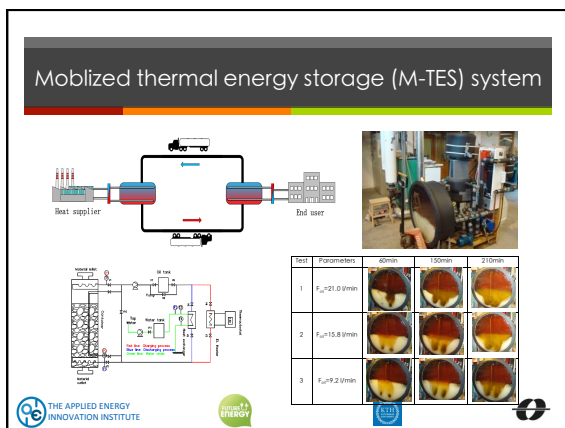
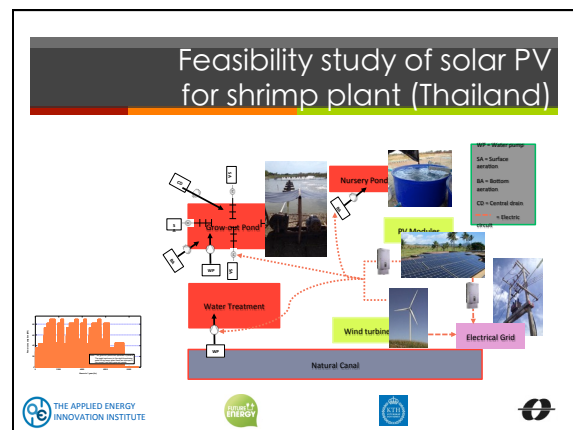
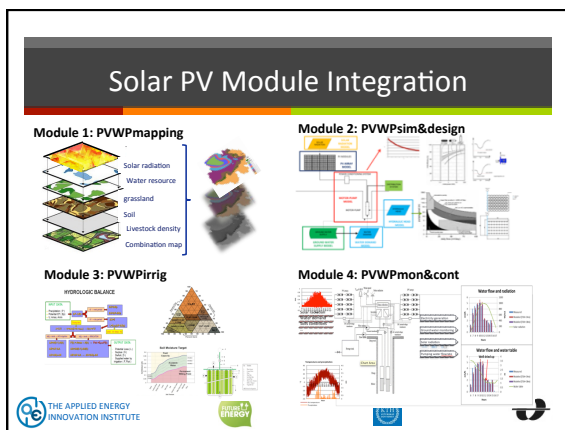
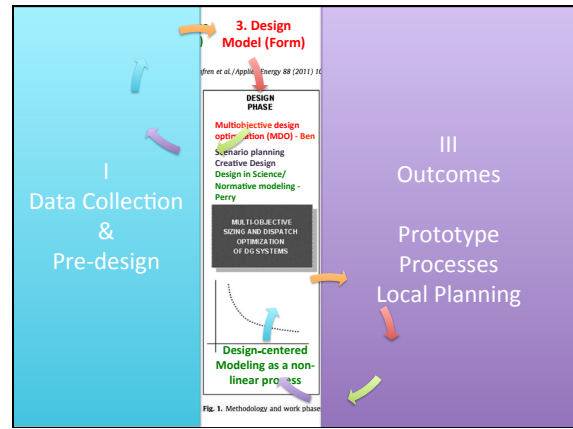
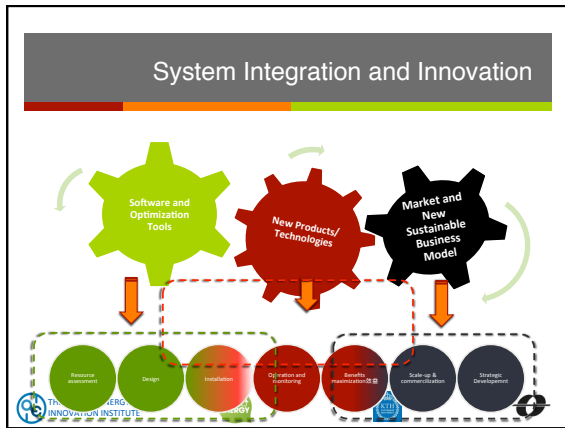
Applied Energy Innovation Institute:
 Global strength with local focus

Global strength:
 • Over 20,000 international experts in Applied Energy network
 • Frontline of clean technologies & innovations
 • Close cooperation with European Small and Medium Enterprises (SMEs)
 • Collaborative creativity

With Local Focus:
 • Physical hub/incubator with international standard service
 • Matching the market needs
 • Strong local manufacturing capacity
 • Joint efforts with Investors
 • Cooperation with local governments and other stakeholders

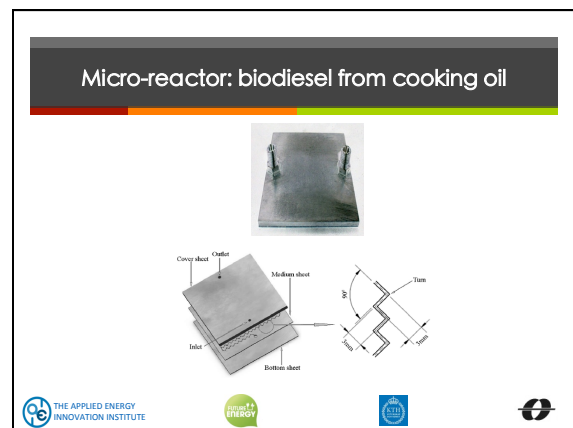
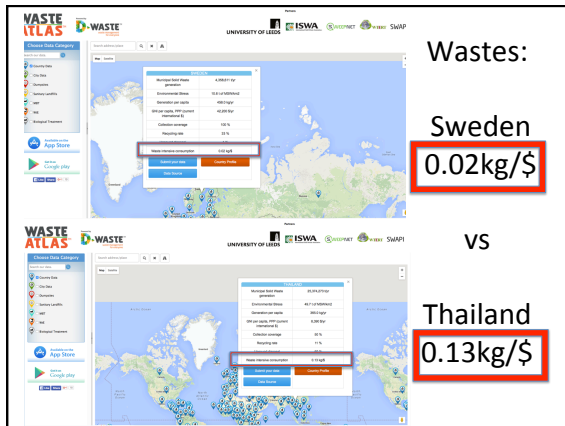
@AEii

Three photographs showing the interior of the Applied Energy Innovation Institute. The first shows a meeting room with a presentation screen. The second shows a modern office space with glass walls. The third shows a large, open-plan area with a tree-like structure.



WtE

In addition to large WtE, developing countries also need distributed technologies/solutions



INNOVATIVE CLEAN ENERGY TECHNOLOGIES NEED INNOVATIONS FOR PENETRATING SUSTAINABLE MARKET

Thanks
jinyue@kth.se

THE APPLIED ENERGY INNOVATION INSTITUTE